



RF security systems

CRYSTAL

Ideally for checkouts in supermarkets, the CRYSTAL RF System stands for superior detection and good looks. Combining the looks of a full acrylic antenne in combination with robust aluminum frames lets it blend in into the stores interior.

Installation

The Crystal Mono is a plug & play system to install. The system will auto-sync, adjusting to its environment and other RF systems. This results in less cables, quick installation and close-to-zero support.

Design

The Crystal Mono dual design combines the best of both worlds and is ideal for all possible retail solutions like Supermarkets, DIY stores, drugstores, garmentshops and shoppingmalls.

The antenna front and back covers are typically designed to avoid trolleys bumping directly into the antenna.

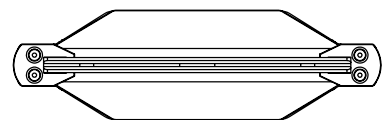
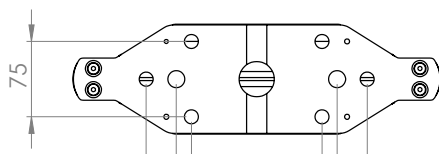
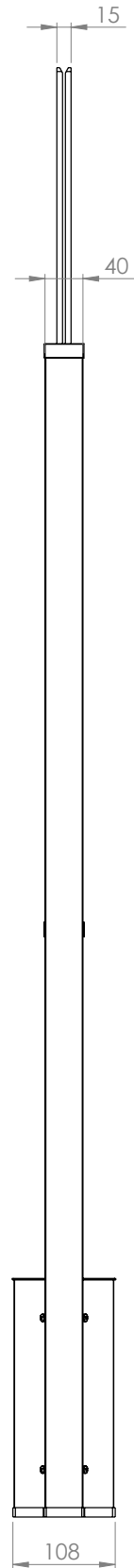
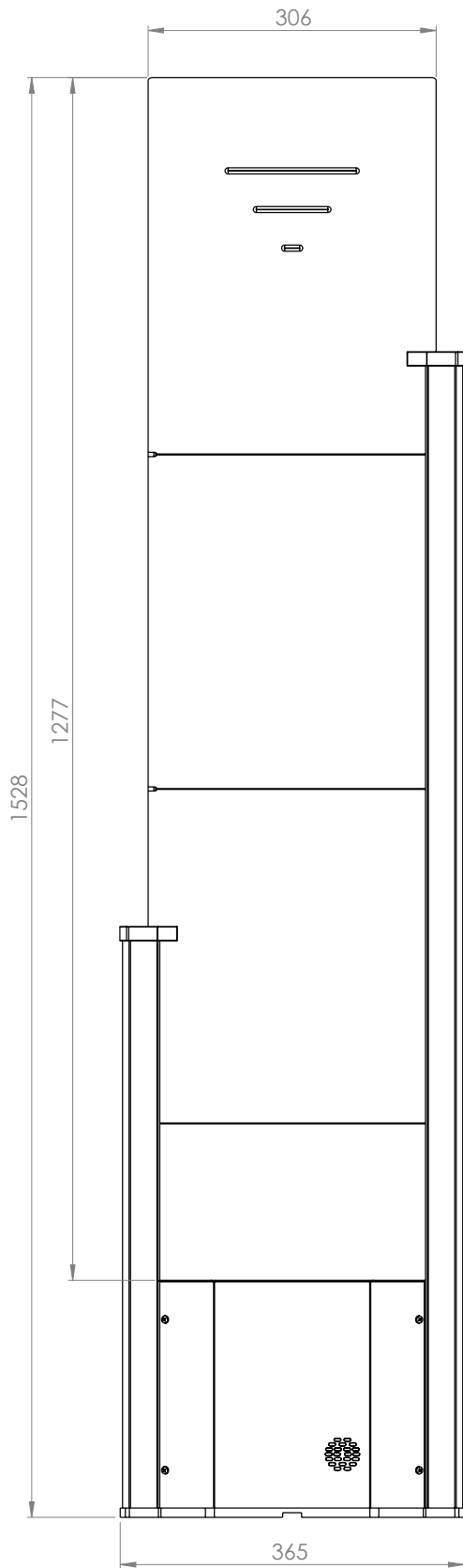
The antenna lights up completely when active in red or blue and when in alarm, it changes color in combination with a loud beeper sound.



CRYSTAL System design



CRYSTAL System dimensions



Features

- Plug & Play installation
- Great design, maximum detection
- RGB alarm light
- Clear buzzer alarm sound
- Robust aluminum profiles
- High quality plexiglass
- Automatic synchronization
- Superior, original electronics

Detection range Mono Systems: total coverage, both sides

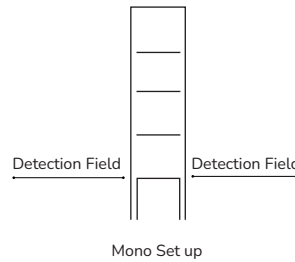
4*4 paper labels	Up to 90 cm
50 mm hard tags	Up to 115 cm

Technical specs

Width	442 mm
Height	1530 mm
Depth	50 mm acrylic
Weight	12 kg
Mains	110/220 V
Operating temperature	Up to 58°C / 185°F

Product reference

Mono System	XS-R1MCRY8
-------------	------------



Detection ranges measured under low electrical noise conditions. Detection ranges under higher electrical noise conditions may decrease. For mono systems, total detection coverage (both sides of the antenna).